

Philanthropic Activities

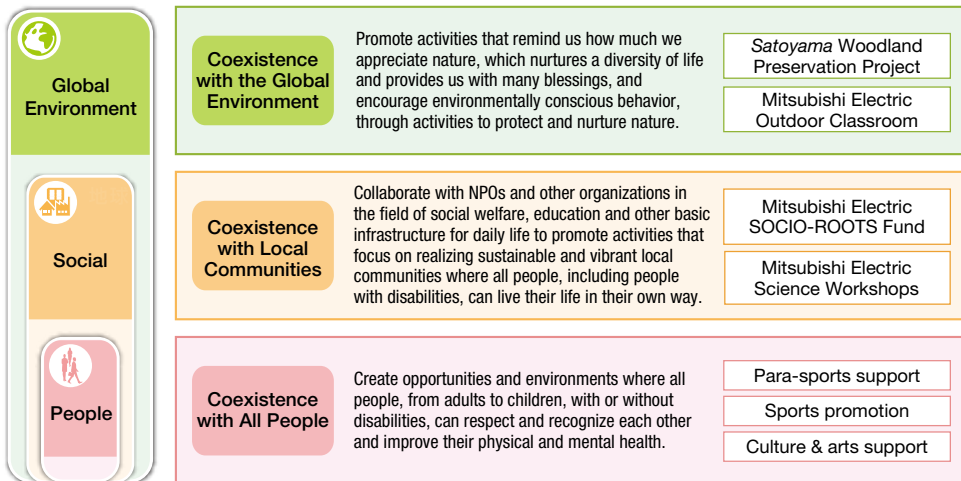
Our Philosophy on Philanthropic Activities

As a corporate citizen committed to meeting societal needs and expectations, the Mitsubishi Electric Group will make full use of its resources to contribute to creating an affluent society in partnership with its employees.

“Three Forms of Coexistence” that the Mitsubishi Electric Group Aims for

To realize an inclusive society, the Mitsubishi Electric Group has been promoting activities at the level of people with a focus on each and every individual, the level of society as an aggregate of local communities, and the level of the Earth, which is the foundation for all individuals and communities.

Employees and the company shall work together to promote the “three forms of coexistence” and realize an inclusive society



Philanthropy Promotion Framework

As part of the Group’s Sustainability initiatives, each Mitsubishi Electric Group company and business site is pursuing community activities to meet local needs. This effort is based on a philosophy of philanthropic activities. The Group also maintains the Mitsubishi Electric SOCIO-ROOTS Fund, an independent charity through which the company matches employee donations in Japan, and independent Mitsubishi Electric charitable foundations in Thailand and the United States.

Main Activities in Fiscal 2024

- Donations from the Mitsubishi Electric SOCIO-ROOTS Fund to support social welfare facilities and children at disaster areas
- *Satoyama* Woodland Preservation Project, Mitsubishi Electric Outdoor Classroom, and Mitsubishi Electric Science Workshop
- Support for developing the next generation of human capital through donations to organizations related to culture, the arts, and sports
- Initiatives for realizing an inclusive society through para-sports support
- Employment assistance for young people with disabilities from the Mitsubishi Electric America Foundation
- Support for next-generation education and environmental protection activities by the Mitsubishi Electric Thai Foundation.
- Support for the disaster-stricken areas in Turkey and Noto Peninsula

Fiscal 2024 Activity Results

Philanthropic activity expenditures
(Mitsubishi Electric and major associated companies in and outside of Japan)

Approx. **2.26** billion yen

* Expenditures include the costs of operating and donating products for philanthropic activities planned by Mitsubishi Electric and/or major associated companies.

Coexistence with the Global Environment

Activities in Harmony with Nature Promoted by Employees and Local Communities

The Mitsubishi Electric Group conducts two types of environmental conservation activities for achieving coexistence with nature, led by employees at each business site.

- **Satoyama Woodland Preservation Project** (Launched in 2007)
The project seeks to restore "familiar nature," such as forests, the ocean, rivers, and fields located in the vicinity of our business sites.
- **Mitsubishi Electric Outdoor Classroom** (Launched in 2006)
The project provides opportunities to experience nature with the local people to encourage awareness of nature ecosystems under the guidance of Nihon Yagaiseikatsu Suishin Kyokai (the Japan Wildlife Activity Association).

The BIOME living things collection app (BIOME Inc.) for smartphones is used as a tool during participation in events and for enjoying nature in everyday life. The project promotes living in coexistence with nature while broadening communication with the local community in collaboration with local governments, the Japan Environment Association (the Junior Eco-Club), and other environmental activity organizations, local experts, kindergartens, and nursery schools.

Fiscal 2024 activity results



Tokyo Bay eelgrass revival activities

Donation and Fundraising Activities at Our Business Locations

Each Mitsubishi Electric business site carries out fund-raising activities suitable to the site, including charity bazaars, charity auctions, and donations through vending machines, to facilitate donations by its employees. In addition, an online donation system was introduced and has been operating since fiscal 2022.



Fundraising activities at each business location

Assistance that Delivers Our Commitment: Conveying the Good Intentions of Employees with a Smile

We provide assistance not only to facilities supporting people with disabilities, but also to nurseries, maternal and child living support facilities, foster homes, and assisted living facilities. We strive to provide face-to-face support by holding presentation ceremonies for donation recipients.



Presentation ceremony for donation recipient

Donations to Areas Affected by Natural Disasters: Support for the Healthy Growth of Children

The Fund is making ongoing efforts to support children affected by natural disasters including the Great East Japan Earthquake. From 2011 to the end of March 31, 2024, a sum of 208.5 million yen has been donated since the program began.



Support for children in an area affected by natural disaster

Coexistence with Local Communities

Mitsubishi Electric SOCIO-ROOTS Fund

The Mitsubishi Electric SOCIO-ROOTS Fund was established in 1992 as a gift program in which the Company matches the amount of any donation made by its employees, thus doubling the goodwill of the gift. Many employees participate in the Fund each year. As of March 2024, the Fund has provided more than 1.54 billion yen to some 2,400 various social welfare facilities and programs.

Branches have been set up at each of our business sites across Japan so that employees can provide monetary gifts that benefit social welfare facilities in their community. The community chests in each prefecture have cooperated since the Fund's inception to provide referrals to donation recipients and information about community needs.

Fiscal 2024 activity results

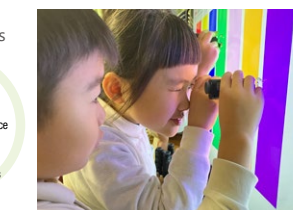
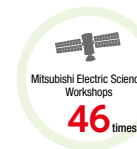


Science and Technology

Mitsubishi Electric Science Workshops

Since 2009, through the "Mitsubishi Electric Science Workshops" children can experience basic scientific principles related to electricity, heat, sound, light, wind, communications and programming. The workshops convey the joy of science through experiments and other activities, show the relationships between the basic scientific principles and real products, and help the children realize how the products are useful in society while enjoying science.

Fiscal 2024 activity results



Learning about light (monitor observation)

Coexistence with All People

Sports Promotion

Para-Sports Support

Mitsubishi Electric promotes initiatives to realize an inclusive society in which everyone, with or without a disability, respects and accepts one another.

As a part of these initiatives, the Company supports the Japanese Para-Sports Association (JPSA) and the Japan Wheelchair Basketball Federation (JWBF) as an official partner to contribute to spreading and raising awareness of para-sports.

Junior Player Discovery Support Project

Since 2022, we have been co-sponsoring the JWBF-sponsored junior player discovery support project.

In fiscal 2024, the project events were held in nine locations including Hokkaido, Ibaraki, Tokyo, Kanagawa, Shizuoka, Osaka, Hiroshima, Kochi, and Kumamoto and had a total of 140 participants.



Project event in Hokkaido

Special Cosponsor of the 49th Emperor's Cup Japan Wheelchair Basketball Tournament

As a special sponsor, Mitsubishi Electric supported the 49th Emperor's Cup Japan Wheelchair Basketball Tournament which drew more than 6,000 spectators. For visitors' enjoyment, digital photo spots for visitors and booths for delivering supportive messages to players were offered at the tournament site.



49th Emperor's Cup Japan Wheelchair Basketball Tournament: Presentation of additional prizes

Activities by Mitsubishi Electric's Sports Teams

Basketball

Nagoya Diamond Dolphins and Mitsubishi Electric Koalas actively engage in activities to promote basketball, such as regularly sending their coaches and players to basketball workshops held throughout Japan for primary and junior high school students.



DEFENSE ACTION workshop to learn about disaster prevention activities while enjoying basketball

Tennis

Professional players and employees who belong to Mitsubishi Electric's Tennis Japan League team "Mitsubishi Electric Falcons" sponsor tennis workshops throughout Japan. Also, through wheelchair tennis and blind tennis, people with/without disabilities interact learning the importance of deepening mutual understanding, and efforts to help people recover emotionally were made through enjoying tennis with local residents in disaster-affected areas.



Wheelchair tennis workshop to support Tohoku disaster area

Badminton

Our badminton team in S/J League II, called Diamond Wings, engages in activities to promote badminton and contribute to the local community mainly in Hyogo prefecture, where the team is based. It helps train athletes and shares the excitement of badminton by holding training sessions and allowing high school students to participate in practices.



Badminton workshop

Supporting Culture and Arts

Mouth and Foot Painting Artists of the World Exhibition

Mitsubishi Electric Building Solutions Corporation sponsors the "Mouth and Foot Painting Artists of the World Exhibition" throughout Japan. As the title indicates, the exhibition features paintings by artists around the world who are deprived of the use of their hands, and thus paint using their mouths or feet to hold a paintbrush.



Mouth and Foot Painting Artists of the World Exhibition

Supporting Narimichi Kawabata, a World-Famous Vision-Impaired Violinist

After graduating from Toho Gakuen School of Music, Mr. Narimichi Kawabata studied abroad at Royal Academy of Music where he was conferred Special Artist Status. Mitsubishi Electric has been supporting Mr. Kawabata since he started activities in the UK. In addition to supporting Mr. Kawabata, Mitsubishi Electric supports orchestras and opera houses to help develop the next-generation of artists.



Mr. Narimichi Kawabata, a world-famous violinist

Activities Overseas

Mitsubishi Electric America Foundation

The Mitsubishi Electric America Foundation (MEAF) has been working toward a more inclusive society in the United States since 1991. Given the high unemployment rate of people with disabilities, combined with the need for capable talent, MEAF has invested \$17.9M, to date, in national grant projects designed to empower youth with disabilities to lead productive lives.

MEAF also matches donations made by employees of Mitsubishi Electric U.S. group companies to support local community needs, contributing and matching a total of \$9.6M, with overall contributions in the U.S. reading \$27.5M to date.



Vocational training through Teaching the Autism Community Trades (TACT)

Recent Activities

MEAF supports organizations that send talented human capital to areas of demand. It also matches girls with disabilities with professional mentors with disabilities to support them into adult employment. Since 2011, MEAF has helped more than 62,000 young people with disabilities find employment.



Disability EmpowHer Network

Topics

Charity to Support Families of Muscular Dystrophy Patients

The employees of Mitsubishi Electric U.S. group companies take part in more than 12,000 hours of volunteer activities and provide donations to meet the needs of the local community. In 2023, employees from all over the United States came together at the MEAF Volunteer Leadership Workshop in Mason, Ohio and held a charity run in support of Parent Project Muscular Dystrophy.



Holding a charity run

[MEAF Initiatives](#)

Mitsubishi Electric Thai Foundation

Established in 1991, the Mitsubishi Electric Thai Foundation (METF) has been contributing to the development of education in Thailand for over 30 years by providing scholarships to college students and helping educational institutions to operate independently. In 2014, METF launched environmental preservation initiatives in collaboration with the Thai government, private organizations, and the Mitsubishi Electric Group's associated companies in Thailand. METF has also been actively involved in environmental conservation volunteer activities in collaboration with the associated companies. In addition, we established the Thai Philanthropic Committee in order to strengthen sustainability initiatives at the associated companies in Thailand. The Committee's latest initiatives include COVID-19 and drought countermeasures to meet Thailand's current needs.



Ceremony at Kasetsart University

Recent Activities

- **Support for educating the next generation**
 - Scholarship program for students at engineering universities
 - Science school for elementary school students
 - Support for construction of child-care facilities



A scene from a tree-planting activity

- **Environmental preservation activities**
 - Support for initiatives to prevent droughts and floods
 - Joint tree planting activities by the Mitsubishi Electric Group in Thailand

In January 2024, METF received an award from Her Royal Highness Princess Sirindhorn in recognition of its activities to construct reservoirs for villages suffering from droughts and floods.

METF also received an award from the Ministry of Natural Resources and Environment of the Kingdom of Thailand in May 2023 for the Community Forest Partnership for Climate Action project it has been running since 2018.

[METF Initiatives](#)



Award presentation ceremony

Example of Overseas Activities by the Mitsubishi Electric Group

[Philanthropic Activities: Activities by Region](#)