

# 軟鋼厚板切断技術 Mz-Power

Thick mild steel cutting technology, "Mz-Power".



**レーザー加工の常識を覆す脅威の加工安定性！各種難加工材に適用可能。**

Outstanding processing stability overturns common sense of laser processing! Applicable to various difficult-to-process materials.

特長 / 効果 Features / Effects

加工データ Machining data

## 1 極厚板の連続安定加工を実現

Achieves continuous and stable processing of extra-thick plates

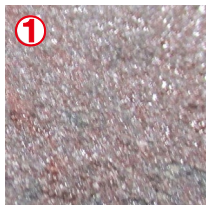
## 2 製品歩留まりと作業性を向上

Improve product yield and workability

## 3 コーナ制御処理時間の削減

Reduced corner control processing time

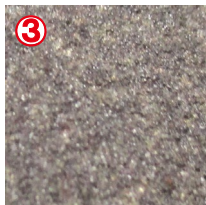
表面状態 Surface condition



SS400  
(高炉材)



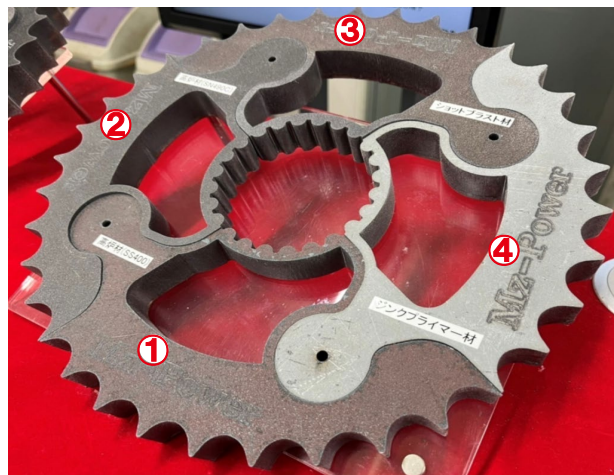
SN490C  
(高炉材)



ショットブラスト  
材



ジンクプライマー  
材



板厚/Thickness : t25mm

# 軟鋼厚板切断技術 Mz-Power

Thick mild steel cutting technology, "Mz-Power".



**レーザー加工の常識を覆す脅威の加工安定性！各種難加工材に適用可能。**

Outstanding processing stability overturns common sense of laser processing! Applicable to various difficult-to-process materials.

特長 / 効果 Features / Effects

## 1 極厚板の連続安定加工を実現

Achieves continuous and stable processing of extra-thick plates

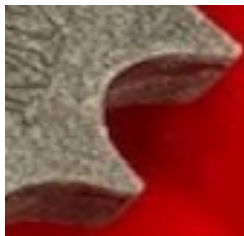
## 2 製品歩留まりと作業性を向上

Improve product yield and workability

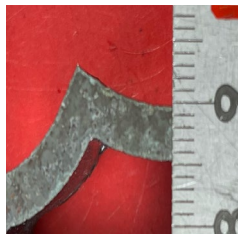
## 3 コーナ制御処理時間の削減

Reduced corner control processing time

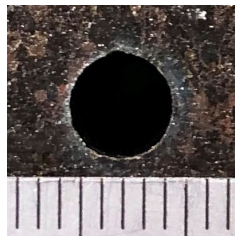
加工品質 Cutting quality



コーナエッジ



薄肉部



φ5mm小穴

加工データ Machining data

SS400(高炉材)  
t25mm



ジンクプライマー材  
t25mm



# 軟鋼厚板切断技術 Mz-Power

Thick mild steel cutting technology, "Mz-Power".



**レーザ加工の常識を覆す脅威の加工安定性！各種難加工材に適用可能。**

Outstanding processing stability overturns common sense of laser processing! Applicable to various difficult-to-process materials.

特長 / 効果 Features / Effects

加工データ Machining data

## 1 極厚板の連続安定加工を実現

Achieves continuous and stable processing of extra-thick plates

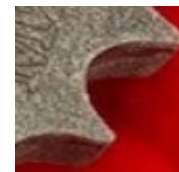
## 2 製品歩留まりと作業性を向上

Improve product yield and workability

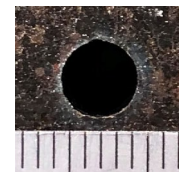
## 3 コーナ制御処理時間の削減

Reduced corner control processing time

切断面 Cutting surface

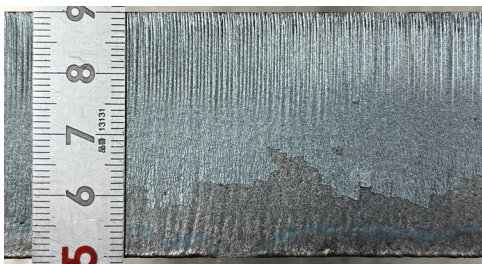


コーナエッジ



Φ5mm小穴

材質/Material : SS400 (高炉材) /Mild steel  
板厚/Thickness : t28/t32/t36/t40 mm



t40mm切断面 / t40mm surface

※GX-Fシリーズではt25mmを超える板厚の加工は仕様外となります。