

Save labor hours, space, and resources for wiring inside the equipment

Labor hours saving

➤ Significantly reduces work labor-hours and contributes to work style reform

- Wiring work time: **8hrs 5min** ➔ **1hr 8min** (approx. 7hrs reduced)

Space saving

➤ Improves space efficiency with remote I/O built-in sensor and small terminal

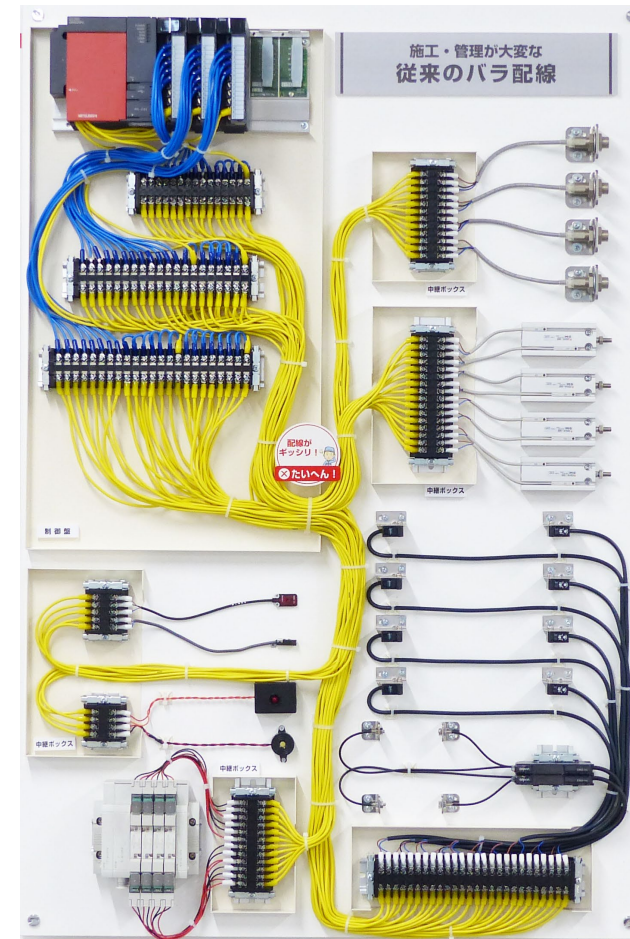
- Occupied area for device and wiring:
4,966cm² ➔ **4,066cm²** (approx. 18.2% reduced)
- Achieved miniaturization of the control panel and elimination of relay boxes

Resource saving

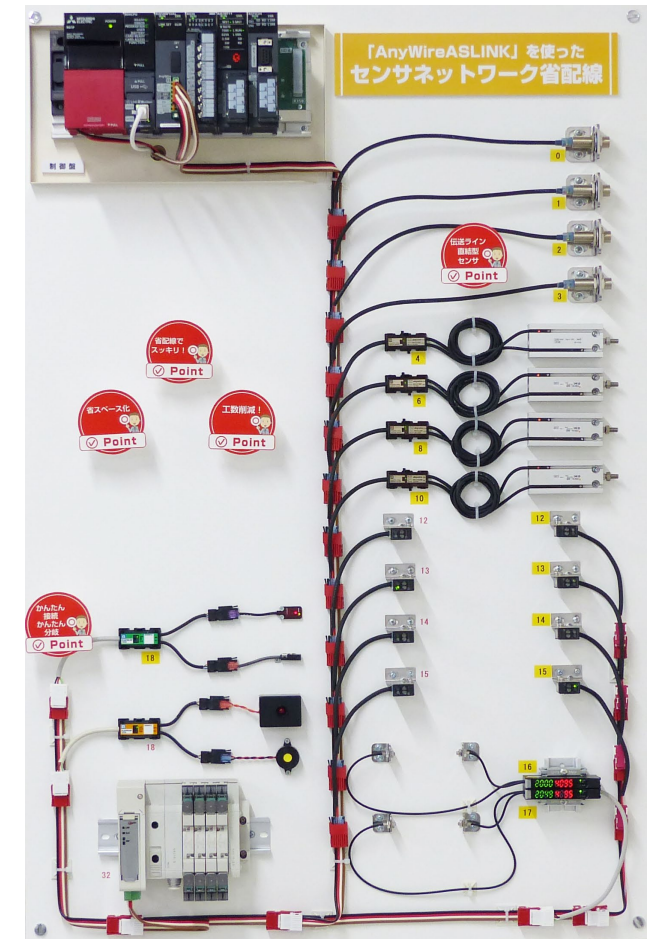
➤ Reduces copper wire usage with wiring-saving cables and connectors

- Cable length used: **90m** ➔ **25m** (approx. 72% reduced)

Demo-kit panels Before & After



▲ Before Parallel wiring



▲ After Anywire wiring-saving

Downsizing and lightening robot gripper, also supporting multi-point control

Reduction of wiring labor-hours

➤ Significantly reduces work labor-hours and contributes to work style reform

- Wiring work time: **1hr 20min** ➔ **9min** (approx.89% reduced)

Downsizing and lightening

➤ Eliminates cable bundles and eliminates relay boxes

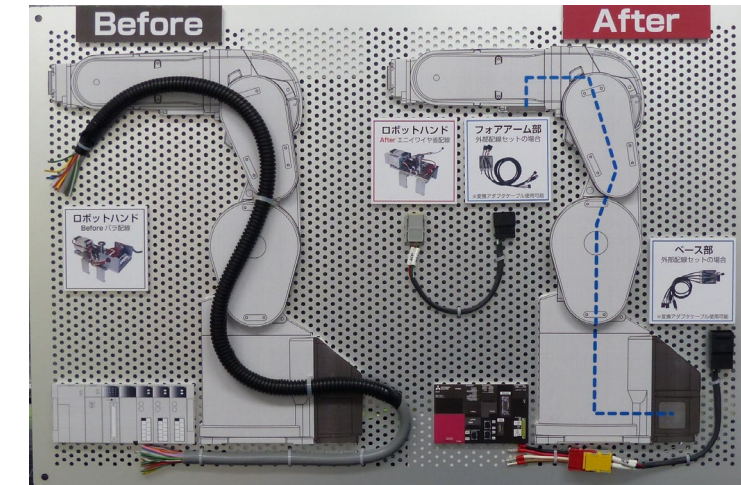
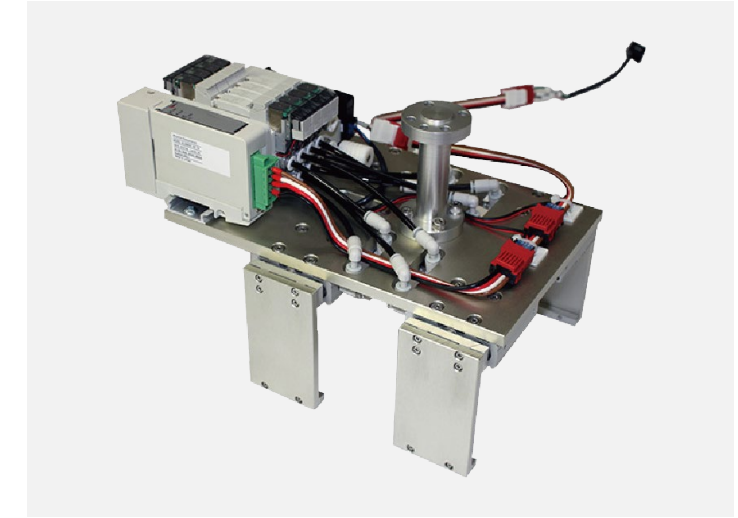
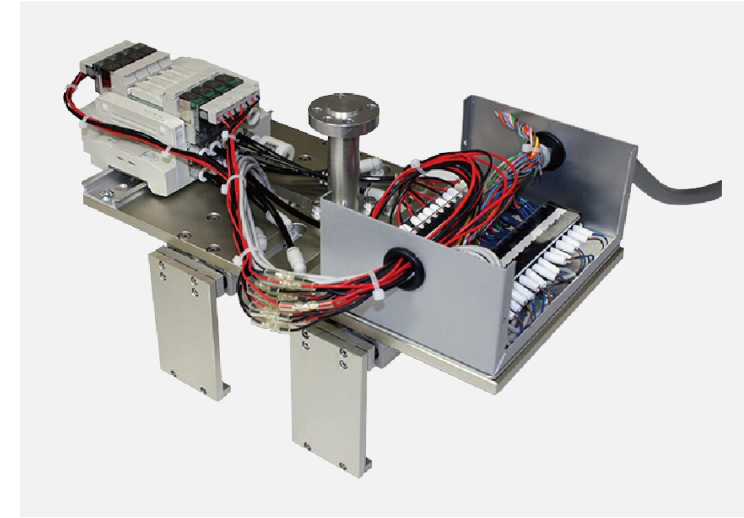
- Gripper area: **450cm²** ➔ **353cm²** (approx. 22% reduced)
- Gripper weight: **3.06kg** ➔ **2.58kg** (approx. 16% reduced)

Supports multi-point control and contributes to reducing the risk of disconnection

➤ Wiring-saving for gripper using robot internal cable

- Supports multi-point control without using external wiring (e.g. 256 input/output points)
- Contributes to reducing the risk of disconnection without narrowing the motion range.
- For MELFA series (RV-FR, RH-FR), connection is even easier with conversion adapter cables.

Demo-kit of robot gripper Before & After



▲ **Before** External wiring & multicore cable

▲ **After** Internal wiring & Anywire wiring-saving

Build a wiring-saving network with small I/O terminals and diagnostic sensors

A wide variety of master units

Supports Mitsubishi Electric MELSEC and various open networks

- MELSEC iQ-R/L/Q/iQ-F/F
- CC-Link IE TSN, EtherNet/IP, PROFINET, EtherCAT etc.

Compact I/O terminals that can be connected to general-purpose sensors and devices

2-point ultra-compact, 4/8/16-point small I/O terminals

- 2-point: USB memory size, input/output/input output mixed.
- 4/8/16-point: e-CON/standard/spring/Euro terminal block, input/output/input output mixed.

Remote I/O built-in ASLINK sensors with diagnostic functions

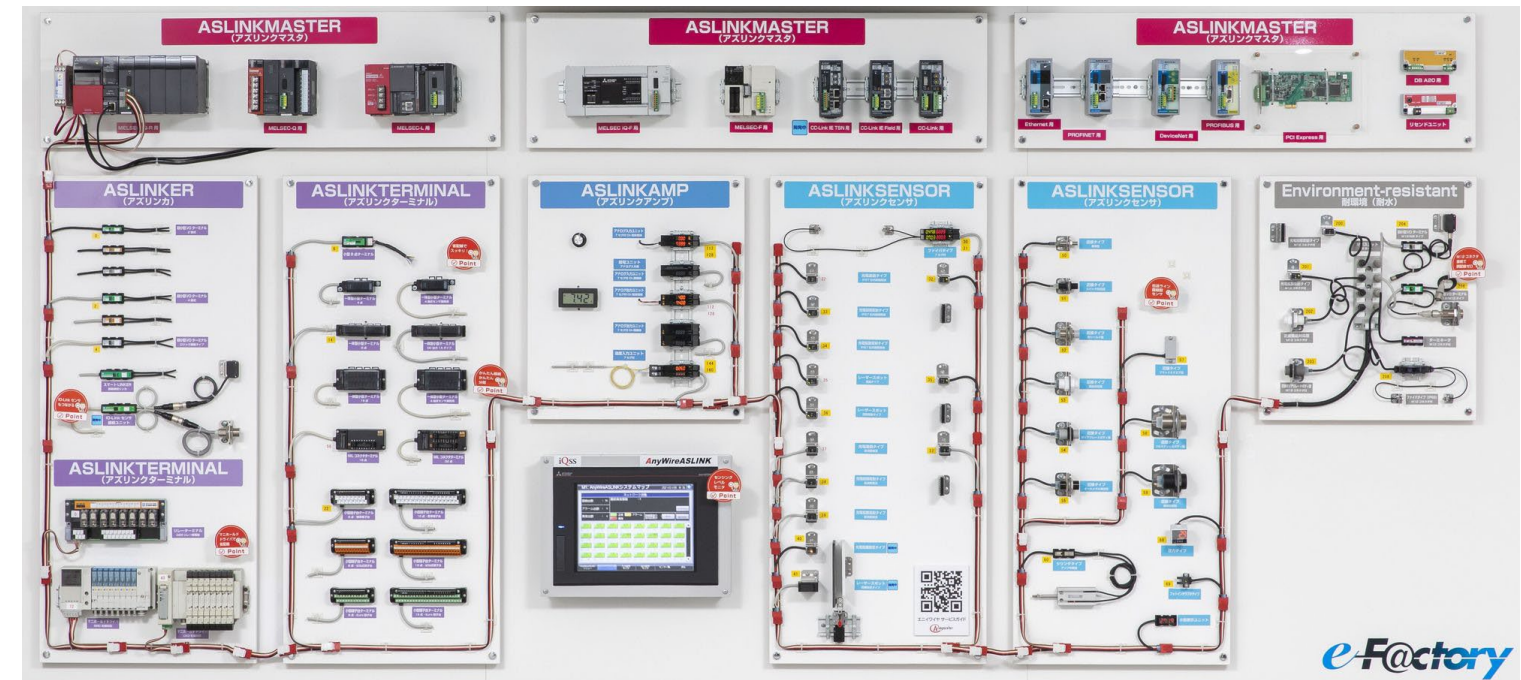
Direct connection type wiring-saving, sensing level monitoring

- Photoelectric, laser, fiber, proximity, pressure, cylinder, photo interrupter, etc.
- Compatible with iQSS for seamless cooperation with Mitsubishi Electric FA products.

Product lineup demo-kit panels

e-Factory

iQSS



AnyWireASLINK