

Utilize on-site GOT's to easily enhance traceability

Graphic Operation Terminal GOT2000 Series Operation Log Function & Operator Authentication Function

Is traceability an issue for you?

Challenge (1) Introducing traceability incurs costs

► Use existing on-site GOTs to achieve traceability —no new equipment needed.

- If GOT's are part of the existing system configuration, traceability can be initiated using the operation log.

Challenge (2) Difficult to know who did what operation, and when they did it

► Keep track of the “who, what, when, and how” of each operation with ease.

- Operation logs can be output to a file and saved for analysis and quality control.

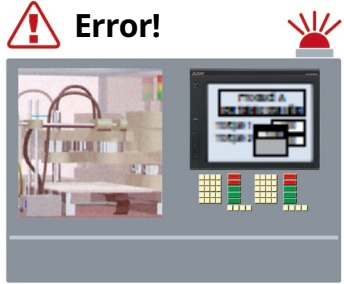
Challenge (3) Anyone can operate the device

► Set limitations on who can operate the GOT.

- Permissions for GOT operation and viewing can be set for each operator.

Benefits of introducing traceability

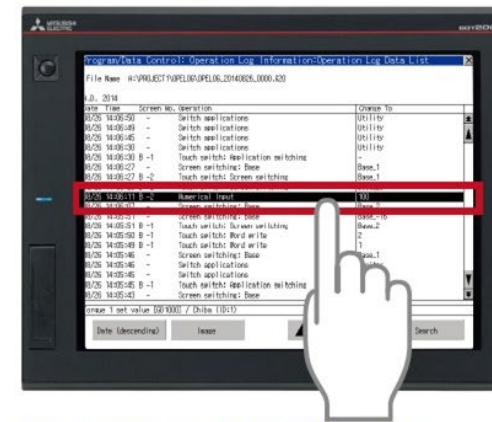
GOT2000



Error!

The “who, what, when, and how” of an operation can be recorded and checked.

Operation log list



Check the brief information of the log



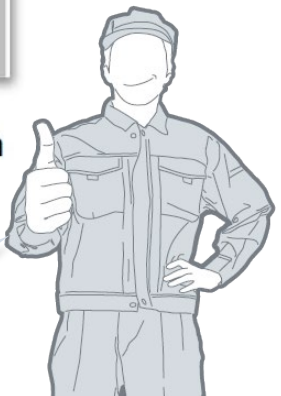
for more details...

Detailed information

Date/Time	:08/26/2014 14:06:11
Function	:NUM_VAL
Numerical Input	:1
Screen No	:Base_2
Operation	:
Torque 1 set value	:100
Operator	:Chiba (ID:1)
User ID	:-
Action No	:1
Data Type	:BIN16
Device	:GD1000
Change To	:100
Change To(Ope.)	:100
Chng From	:10
Chng From(Disp)	:10

Check the detailed information of the log

Using operation logs makes it easier to identify the source of issues.



Are you tired of office-worksite walk arounds?

Challenge (1) Called for a problem but the details are unclear

➤ **Monitor the status of the equipment remotely using a mobile terminal.**

- The information monitored by the local GOT or GT SoftGOT2000 can be checked on a mobile device/terminal via a web browser .

Challenge (2) Entering restricted access areas, like cleanrooms, needs elaborate preparation

➤ **Check the status of the equipment without entering the cleanroom/restricted area.**

- By using a web browser on devices such as tablets, it is possible to check the status of the equipment remotely.

Challenge (3) Factory walk arounds looking for issues

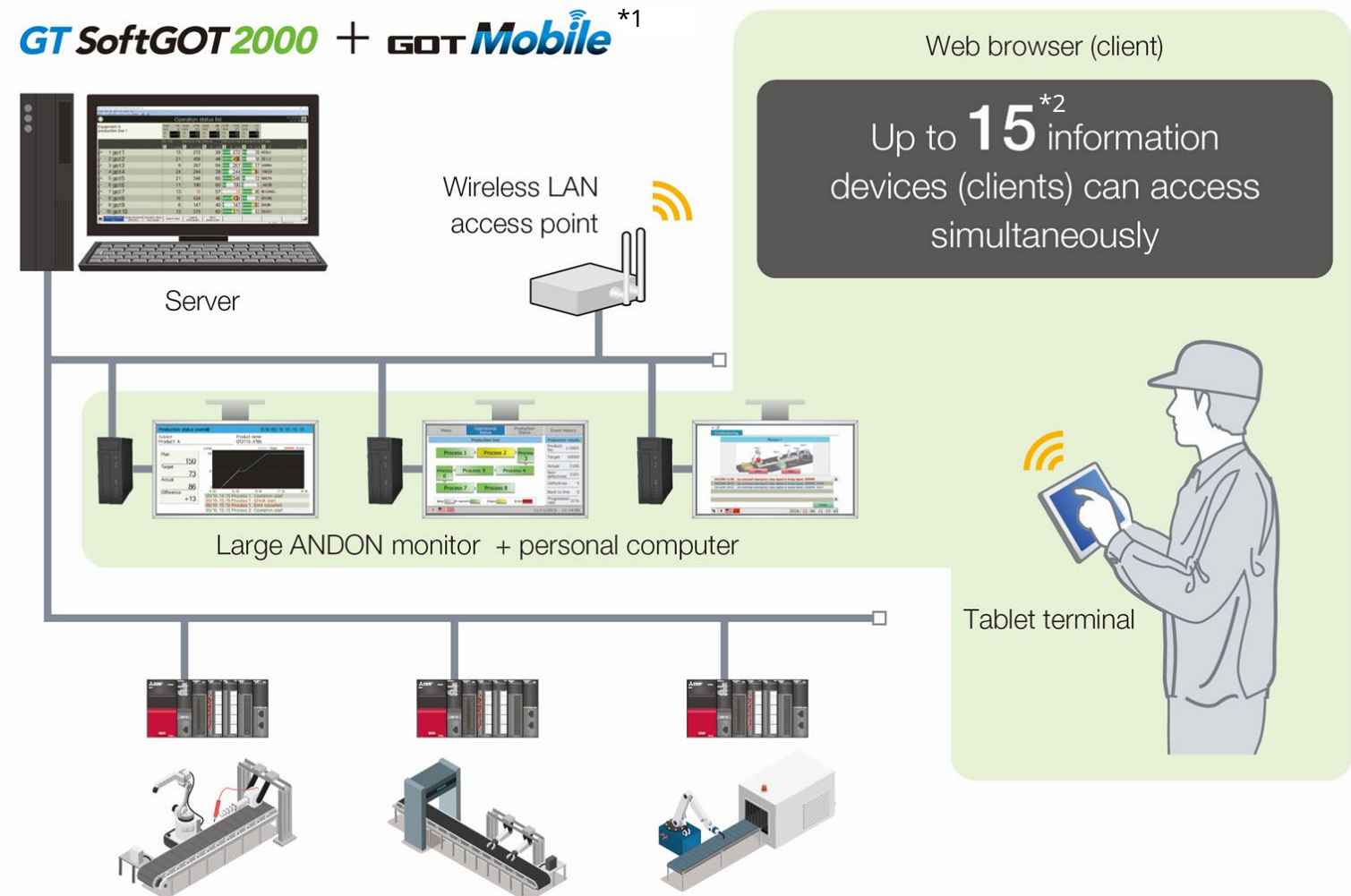
➤ **The use of multiple ANDON monitors can help provide visibility of the entire factory.**

- Mobile access screen content can be shown on a large display, acting as an ANDON, enabling equipment status to be monitored and the entire factory visualized.

Overview

GOT Mobile

The combined power of GT SoftGOT2000 + GOT Mobile



* 1 One license is required for each personal computer on which GT SoftGOT2000 is installed.

* 2 In the case of GOT+GOT Mobile, up to five information devices can simultaneously connect to the GOT.

Do you want to visualize your entire factory?

Challenge (1) Building/installing new systems is costly and time-consuming

➤ **Utilize existing on-site GOTs to quickly and easily build data systems.**

- If you have an existing on-site GOT, you can easily build a system by using the associated tools.

Challenge (2) No site standard for devices and networks

➤ **Flexible monitoring realized through compatibility with various networks and FA devices.**

- GOTs can be used to monitor, collect and aggregate information from various target devices/networks. This data can then be shared further from the GOT to other, overall management systems.

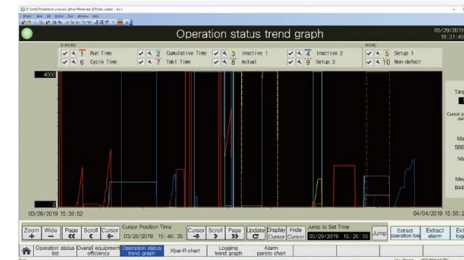
Challenge (3) Lacking experience and know-how

➤ **No programming expertise needed.**

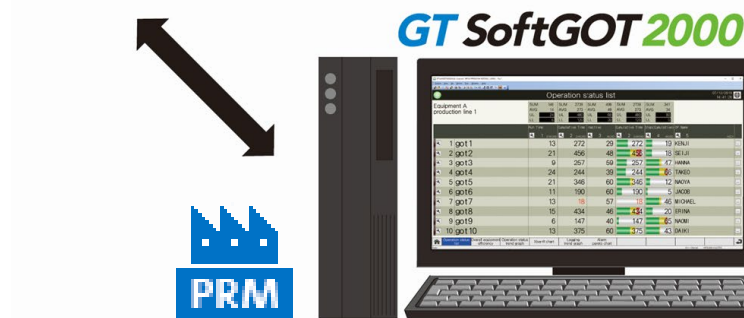
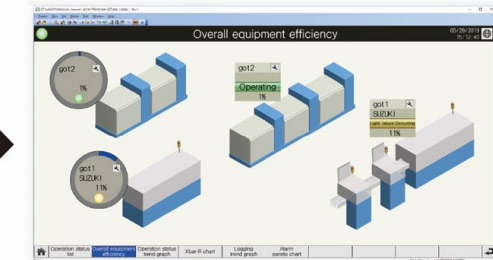
- Easily configure the system using the setting tool, and by following the manual.

Overview

Displaying graphs



Displaying efficiency visually



Displaying a list

Process Remote Monitoring setting tool

A dedicated configuration tool collects data and displays it on a monitoring screen



Compatibility with multiple networks

CC-Link I/ETSN CC-Link
SSCNET III/H Ethernet etc.

Are you missing important updates/info?

Challenge (1) Remotely monitored alarms go unnoticed

➤ Stay informed with push notifications.

- When an alarm generated by the GOT or GT SoftGOT2000 is detected, it is notified to your mobile device/terminal through vibration, sound, or a banner.

Challenge (2) Cannot regularly check your mobile device/terminal

➤ Receive alarms on your smartwatch.

- Even when you're in a meeting or it's not possible to access your mobile device/terminal, you can still receive alarm notifications on your smartwatch.

Challenge (3) Cannot respond to alarms immediately

➤ Notes and messages can be sent to the on-site GOT.

- Working memos can be created to share information, such as the status report on error occurrences and the daily check results of on-site equipment.

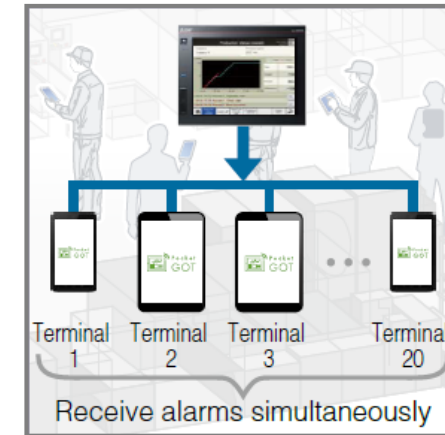
* Use of the GOT Mobile function is needed to receive user alarms using Pocket GOT. **GOT Mobile**

How to use Pocket GOT

Usage



Monitor up to 20 GOTs



Up to 20 operators can share information

Coming soon to iOS



Receive alarm notifications on your smartwatch



Send work reports to the GOT



Take pictures of the equipment or the GOT screen and send them to the GOT