

TECHNICAL BULLETIN

[Issue No.] T99-0072

[Page] 1/3

[Title] Production discontinuation
of A6SIM-X64Y64 simulation module

[Date of Issue] Mar., '06

[Relevant Models] A6SIM-X64Y64

Thank you for your continued support of Mitsubishi programmable logic controllers, MELSEC-A/QnA series.
Production of the following A6SIM-X64Y64 simulation module will be discontinued.

1. Models to be discontinued

Product Name	Model
Simulation module	A6SIM-X64Y64

2. Schedule

Transition to made-to-order : Through April, 2006
Order deadline : Through July, 2006
The final production : Through September,2006

3. Reasons for discontinuing production

Some parts of the above products are now obsolete. Therefore, we will have difficulty to maintain the production system.

4. Repair acceptance

Repair acceptance: Through September,2013 (for 7 years after production discontinuation)

5. Alternative models

There are no alternative simulation modules.
Refer to "6. Alternatives" and take a suitable action.

[Issue No.] T99-0072
[Title] Production discontinuation
of A6SIM-X64Y64 simulation module
[Relevant Models] A6SIM-X64Y64

[Page] 2/3
[Date of Issue] Mar., '06

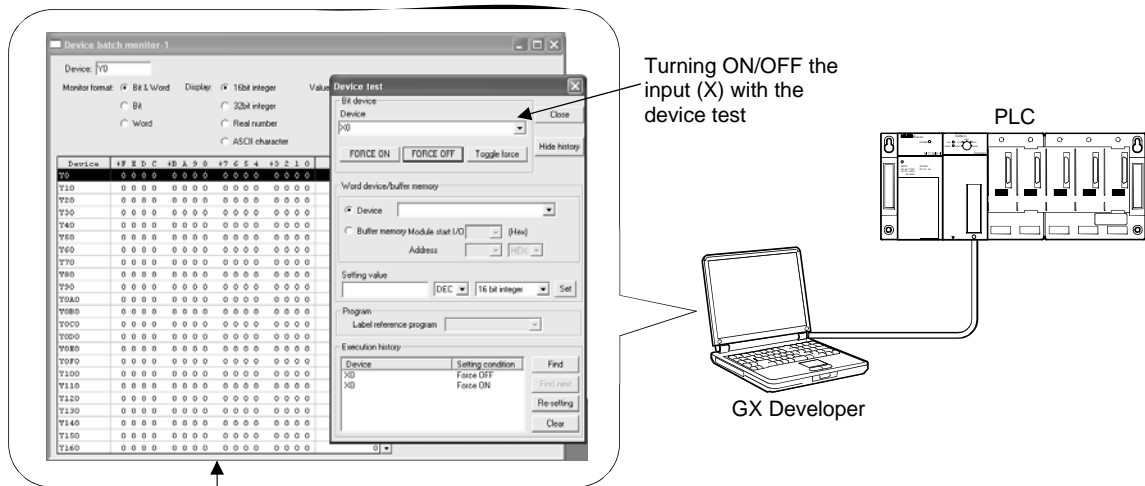
6. Alternatives

(1) When using A6SIM-X64Y64 for debugging sequence programs

In the case that sequence programs have been debugged with a simulation module without installing an I/O module to the base unit, either methods (a) or (b) below will do.

(a) Simulation using GX Developer's monitoring and test functions

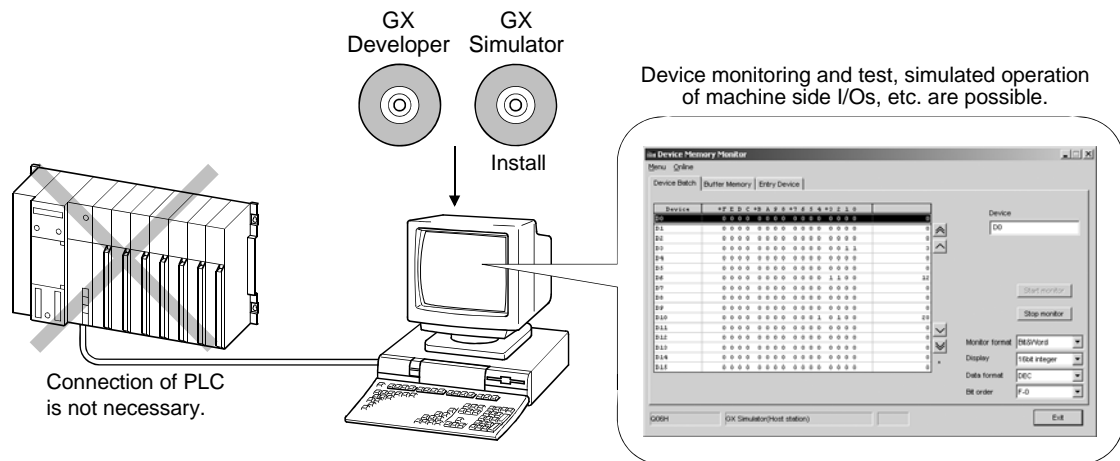
Connect the GX Developer with a PLC. Turn ON/OFF the input (X) with the GX Developer device test, monitoring the output (Y) with a device batch monitoring using the GX Developer. This allows to debug sequence programs on the desk without installing the I/O module in the base unit.



Monitoring the output (Y) with the device batch monitoring

(b) Simulation using GX Simulator

By using GX Simulator together with GX Developer, sequence programs can be debugged on single personal computer.



Connection of PLC is not necessary.

[Issue No.] T99-0072

[Title] Production discontinuation
of A6SIM-X64Y64 simulation module

[Page] 3/3

[Date of Issue] Mar., '06

[Relevant Models] A6SIM-X64Y64

(2) When using A6SIM-X64Y64 for I/O module

In the case that the A6SIM-X64Y64 has been installed to a control panel and has been used for the I/O module, the following method is usable.

Connect a PLC with a GOT, creating switches for inputs and indicator lamps for outputs on the GOT screen. This allows to import the A6SIM-X64Y64 inputs (X) and indicate ON/OFF of the outputs (Y).

