

MITSUBISHI

Mitsubishi Electric Corporation **Industrial** Robot

MELFA Technical News

BFP-A6079-0081E

May 2013

Subject: Report of addition of the spanner for External Wiring and Piping Box

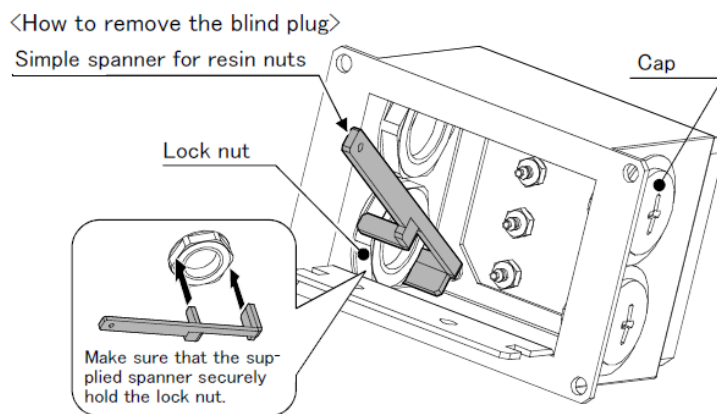
Applicable to: External Wiring and Piping Box
(The option device for RH-3/6/12/20FH series)

Thank you for your continued support of Mitsubishi industrial robot "MELFA".
This Technical news explain the addition of the spanner for External Wiring and Piping Box in RH-3/6/12/20FH.

1. Product name , model name and added part

- (1)Product name : External Wiring and Piping Box (The option device for RH-3/6/12/20FH series)
- (2)Model name : 1F-UT-BOX (RH-3FH/6FH : For solenoid valve 4set. : $\Phi 4 \times 8$)
1F-UT-BOX-01 (RH-12FH/20FH : For solenoid valve 4set. : $\Phi 6 \times 8$)
- (3)Added part name : The spanner for External Wiring and Piping Box

The supplied simple spanner is used when removing the blind plug and attaching a cable clamp.



2. Reason for change

Tool convenient means

The change makes it easy to remove the blind plug for External Wiring and Piping Box.

3. Time of change

May, 2013

(*)The device produced before above hasn' t been attached with the spanner.