

Appearance Change of the Inner Carton Material and Hand Holes of the Packaging Box for the FR-HEL Inverter Option

Thank you for your continued patronage of Mitsubishi Electric drive control products.
For the applicable models, the appearance of the inner carton material and hand holes of the packaging box will be changed, and recycle marks will be added.

1. Products Affected

- FR-HEL-0.4K
- FR-HEL-11K to 55K
- FR-HEL-H5.5K to H55K

2. Details of Change

- (1) The inner carton material and hand holes of the packaging box will be changed as we have changed the packaging box manufacturer to improve obtainability.
This packaging specification change does not affect the quality, performance, or specifications of the products.

[Models for which the inner carton material will be changed]

- FR-HEL-0.4K
- FR-HEL-11K to 55K
- FR-HEL-H7.5K
- FR-HEL-H11K
- FR-HEL-H18.5K to H55K

[Models for which the hand holes will be changed]

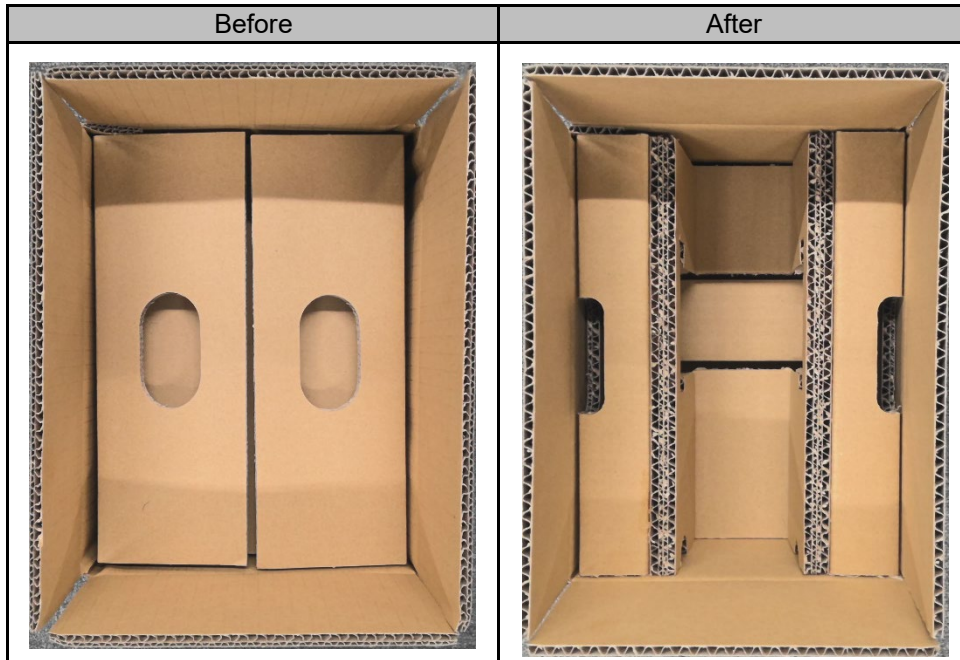
- FR-HEL-H5.5K to H55K

Appearance of inner carton material of the packaging box for the FR-HEL-0.4K

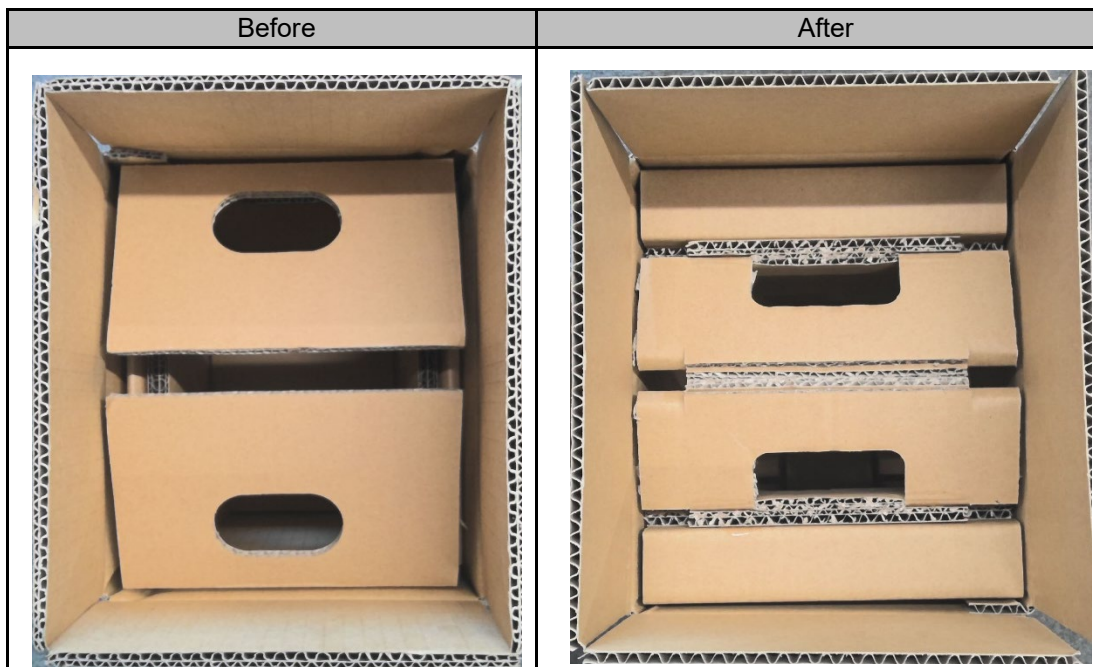


Date of issue	January 2025	Title	Appearance Change of the Inner Carton Material and Hand Holes of the Packaging Box for the FR-HEL Inverter Option	Mitsubishi Electric Corp., Nagoya Works 5-1-14 Yada-minami, Higashi-ku, Nagoya 461-8670 Tel.: +81 (52) 721-2111 Main line
----------------------	--------------	--------------	---	---

Appearance of inner carton material of the packaging box for the FR-HEL-11K to 55K, FR-HEL-H7.5K, FR-HEL-H11K, and FR-HEL-H18.5K to H30K




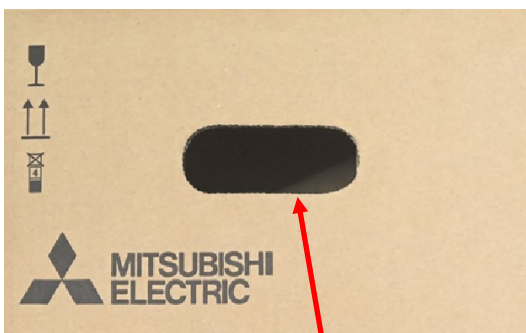
Appearance of inner carton material of the packaging box for the FR-HEL-H37K to H55K



Appearance of the hand hole on each side of the packaging box for the FR-HEL-H5.5K to H11K

Before	After
 <p>With a hole</p>	<p>Without a hole</p>

Appearance of the hand hole on each side of the packaging box for the FR-HEL-H15K to H55K

Before	After
	 <p>Position and size of the hole changed</p>

(2) Recycle marks will be printed on the packaging box for the applicable models.


The position of the recycle marks differs by the model.

This packaging specification change does not affect the quality, performance, or specifications of the products.

[Models for which recycle marks will be added]

FR-HEL-11K to 55K

FR-HEL-H5.5K to H55K

Before	After
<p>No recycle marks</p>	 <p>Recycle marks printed</p>

3. Date of Change

The change will be sequentially applied to products manufactured in February 2025 or later.

4. Product Identification

The packaging can be identified visually.