

### Appearance Change of the Main Circuit Terminal Screw for the FR-A800, FR-A800 Plus, FR-B, B3, and FR-F800 Series Inverters

Thank you for your continued patronage of Mitsubishi Electric drive control products.  
The appearance of the M5 screws used for the main circuit terminals of the products will be changed.

#### 1. Products Affected

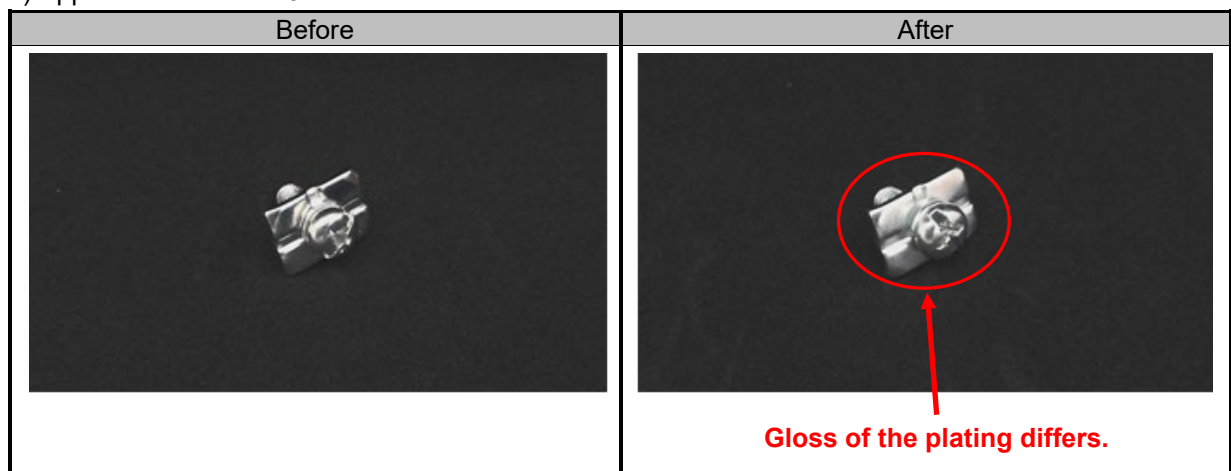
Series	Model (Note)
FR-A800	FR-A820-00630(11K)(-)** FR-A840-00310(11K)(-)** to 00380(15K)(-)** FR-A860-00320(-)**
FR-A800 Plus	FR-A820-00630(11K)(-)**-CRN FR-A840-00310(11K)(-)**-CRN to 00380(15K)(-)**-CRN FR-A820-00630(11K)(-)**-R2R FR-A840-00310(11K)(-)**-R2R to 00380(15K)(-)**-R2R FR-A820-00630(11K)(-)**-AWH FR-A840-00310(11K)(-)**-AWH to 00380(15K)(-)**-AWH FR-A840-00310(11K)(-)**-ELV to 00380(15K)(-)**-ELV
FR-B, B3	FR-B-11K FR-B-15K (A840) FR-B3-11K FR-B3-N11K FR-B3-H11K to H15K FR-B3-NH11K to NH15K
FR-F800	FR-F820-00630(15K)(-)** FR-F840-00310(15K)(-)** to 00380(18.5K)(-)** FR-F860-00320(-)**

(Note) \*\* indicates alpha numeric combination which means an inverter type such as E1 and E2.

#### 2. Details of Change

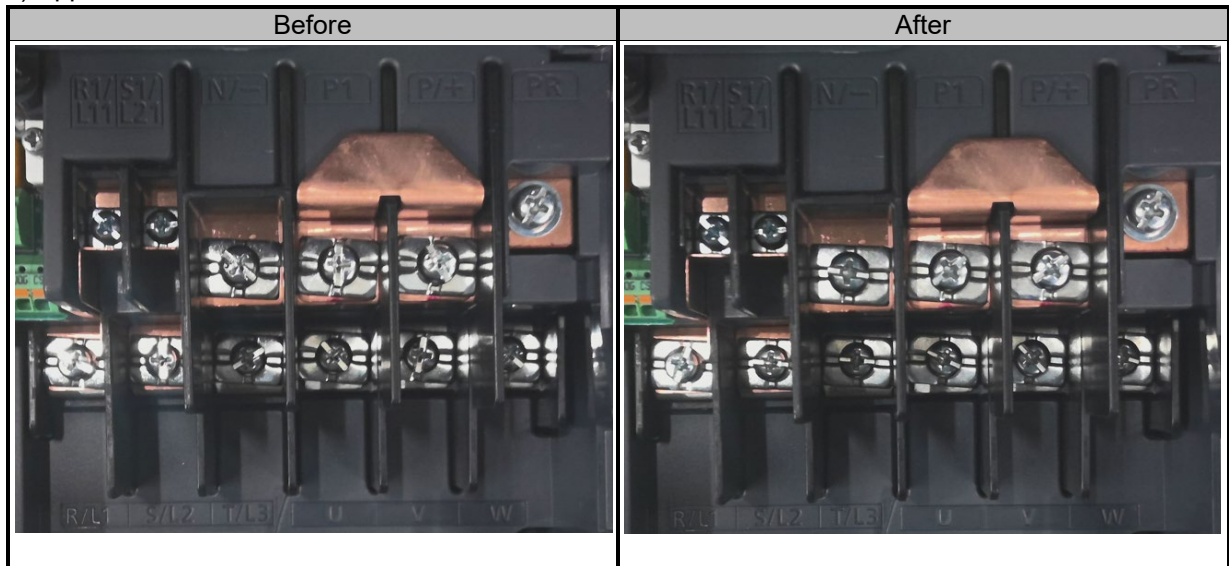
Due to the closure of the screw manufacturer, the M5 screws used for the main circuit terminals of the products will be changed. Compared with conventional screws, the gloss of the plating differs.  
The change does not affect the quality, performance, or specifications of the products.

##### 1) Appearance of the M5 screw



<b>Date of issue</b>	May 2024	<b>Title</b>	Appearance Change of the Main Circuit Terminal Screw for the FR-A800, FR-A800 Plus, FR-B, B3, and FR-F800 Series Inverters	Mitsubishi Electric Corp., Nagoya Works 5-1-14 Yada-minami, Higashi-ku, Nagoya 461-8670 Tel.: +81 (52) 721-2111 Main line
----------------------	----------	--------------	--	---

## 2) Appearance of the terminal block



## 3. Date of Change

The change will be sequentially applied to the products manufactured in June 2024 or later.

## 4. Product Identification

The SERIAL (determined by date of production) can be checked on the rating plate or packaging plate.

SERIAL example on rating plate	SERIAL example on packaging plate
□ 4 6 ○○○○○○	□ 4 6 ○○○
<u>Symbol Year Month Control number</u>	<u>Symbol Year Month Control number</u>

SERIAL

SERIAL

The SERIAL consists of one symbol, two characters indicating the production year and month, and the control number (six characters for the rating plate, three characters for the packaging plate).

The last digit of the production year is indicated as the Year, and the Month is indicated by 1 to 9, X (October), Y (November), or Z (December).