

Cut down on overtime MX Works



MX Component/
MX Sheet version

Start up extra-low-cost IoT with MX Component/MX Sheet.



Manually writing down the planned and actual production volumes is so analog.

People make mistakes, and the data are not in real time.



Go digital with MX Component/MX Sheet.

- ✓ Real time information
- ✓ Accurate count
- ✓ Automatic calculation of the total production of the day

The beginning of a long day...

8:00

Let's see our plans for the day.

No. 17th	Production line A		
	Planned	Target	Actual
8:00-9:00	100	80	
9:00-10:00	100	80	
10:00-11:00	100	80	
11:00-12:00	100	80	
13:00-14:00	100	80	
14:00-15:00	100	80	
16:00-17:00	100	80	
Total	800	720	

11:00

Are we a bit behind?

Yes. The production line was stopped for a while.

What? Nobody has told me that.

No. 17th	Production line A		
	Planned	Target	Actual
8:00-9:00	100	80	85
9:00-10:00	100	80	70
10:00-11:00	100	80	
11:00-12:00	100	80	
13:00-14:00	100	80	
14:00-15:00	100	80	
16:00-17:00	100	80	
Total	800	720	

15:00

As long as the total is correct. That's all that matters.

Are you sure the numbers are correct?

Are you sure the total will be correct?

No. 17th	Production line A		
	Planned	Target	Actual
8:00-9:00	100	80	85
9:00-10:00	100	80	70
10:00-11:00	100	80	80
11:00-12:00	100	80	82
13:00-14:00	100	80	85
14:00-15:00	100	80	
16:00-17:00	100	80	
Total	800	720	

17:00

I got to write a report.

I will fill out the form... and call it a day.

Wrong total. I knew it.

No. 17th	Production line A		
	Planned	Target	Actual
8:00-9:00	100	80	85
9:00-10:00	100	80	70
10:00-11:00	100	80	80
11:00-12:00	100	80	82
13:00-14:00	100	80	85
14:00-15:00	100	80	80
16:00-17:00	100	80	81
17:00	100	80	87
Total	800	720	720

See the numbers on the monitor.



8:00

Our production plan for the day is 750 units.

Got it.

Planned	750						
Actual	182						
Progress rate	5						
Stoppage	0:00						
08:00-09:00	100	90	45	13:00-14:00	100	100	105
09:00-10:00	100	75	35	14:00-15:00	100	100	168
10:15-11:00	75	70	25	15:15-16:00	75	75	75
11:00-12:00	100	90	118	16:00-17:00	100	100	
Total	750	700	496				

Real time monitoring

Let's see how the production is going.

Trouble at 10:00, and back in operation in 7 minutes

Planned	750						
Actual	182						
Progress rate	66.1						
Stoppage	0:07						
08:00-09:00	100	90	45	13:00-14:00	100	100	105
09:00-10:00	100	75	35	14:00-15:00	100	100	168
10:15-11:00	75	70	25	15:15-16:00	75	75	75
11:00-12:00	100	90	118	16:00-17:00	100	100	
Total	750	700	496				

No problem meeting the production plan

17:00

We met the plan. Want to go grab a bite?

Sure. Sounds good.

You are not still handwriting numbers on a whiteboard like this, are you?

Production line A Safety first

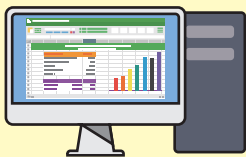
Nov. 17th	Planned	Target	Actual	Difference	Message
8:00~9:00	100	90	92	+2	
9:00~10:00	100	90	71	-11	Stopped for 0.25 hr. for repair
10:00~11:00	100	90			
11:00~12:00	100	90			
13:00~14:00	100	90			
14:00~15:00	100	90			
16:00~17:00	100	90			
Total	800	720			

Be sure to update every hour!

Start up extra-low-cost IoT with

MX Component / MX Sheet

✓ 1. Have a computer with Excel® ready.



MELSOFT MX Works
(MX Component/MX Sheet)



✓ 2. Easily connect to the CPU by following the wizard.

Supports a wide range and even older types of programmable controllers

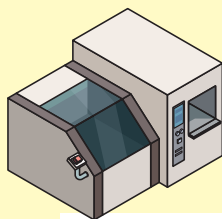
Supported MELSEC programmable controllers

- Q Series
(including Motion CPU/C language CPU/Safety CPU)
- L Series
- FX Series
- A Series
- iQ-R Series
- iQ-F Series



Supported communication channels

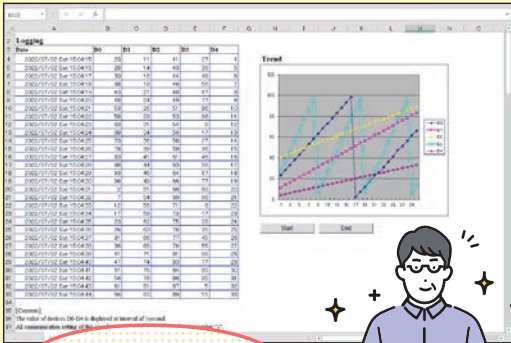
- Ethernet
- USB
- Serial communication



✓ 3. Have the figures automatically imported to your Excel® template.



•Automatically creates lists and graphs



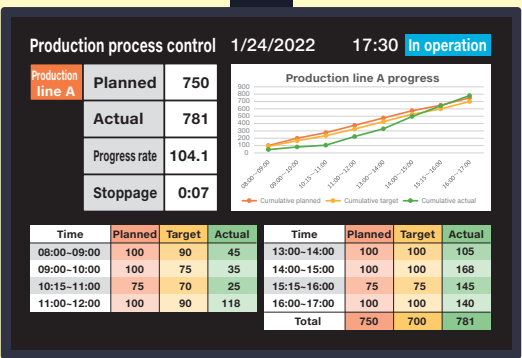
So easy to write a report



✓ 4. Share the progress visually with all operators on site.



- See the real-time progress at a glance.
- Create your original display format by editing Excel® spreadsheets.
- See the monitor from a distance.



No handwriting
Progress at a glance
Better concentration on the task at hand



■ Price list: MELSOFT MX Works (MX Component, MX Sheet)

·32-bit version (A Series, Q Series, L Series, iQ-R Series, iQ-F Series, FX Series)

Product name	Model	Standard price
MELSOFT MX Works (A set of MELSOFT MX Component Version 4 and MX Sheet Version 2 (Japanese version))	SW2DNC-SHEETSET-J	¥100,000

·64-bit version* (Q Series, L Series, iQ-R Series, iQ-F Series, FX Series)

Product name	Model	Standard price
MELSOFT MX Works (A set of MELSOFT MX Component Version 5 and MX Sheet Version 3 (Japanese version))	SW3DND-SHEETSET-J	¥100,000

*: The A Series or the Q Series (basic model, high-performance model) are not supported. See the manual for the supported models.

Learn more about the functions,
and download manuals.

MITSUBISHI ELECTRIC FA Global Website



MX Component



MX Sheet

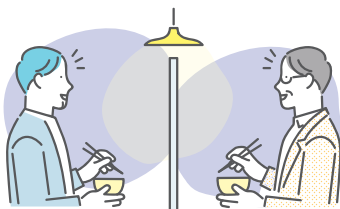
MX Component Version 5 Reference manual*



MX Sheet Version 3 Operating manual*



*: A free FA member registration may be required to view the manual.



Have socially
distanced fun